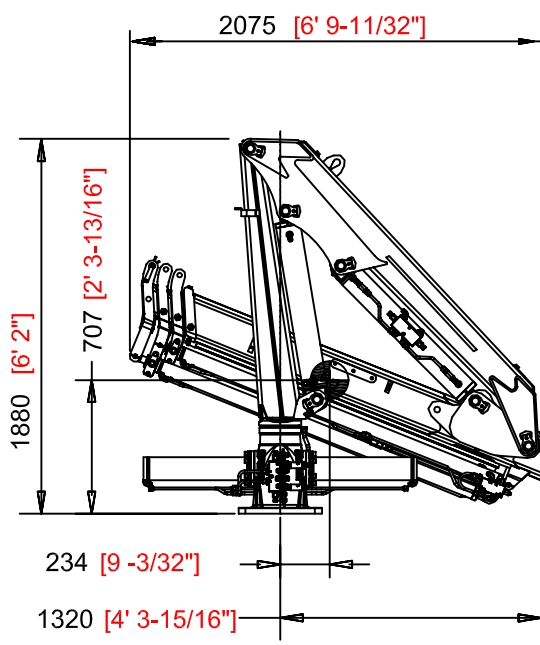
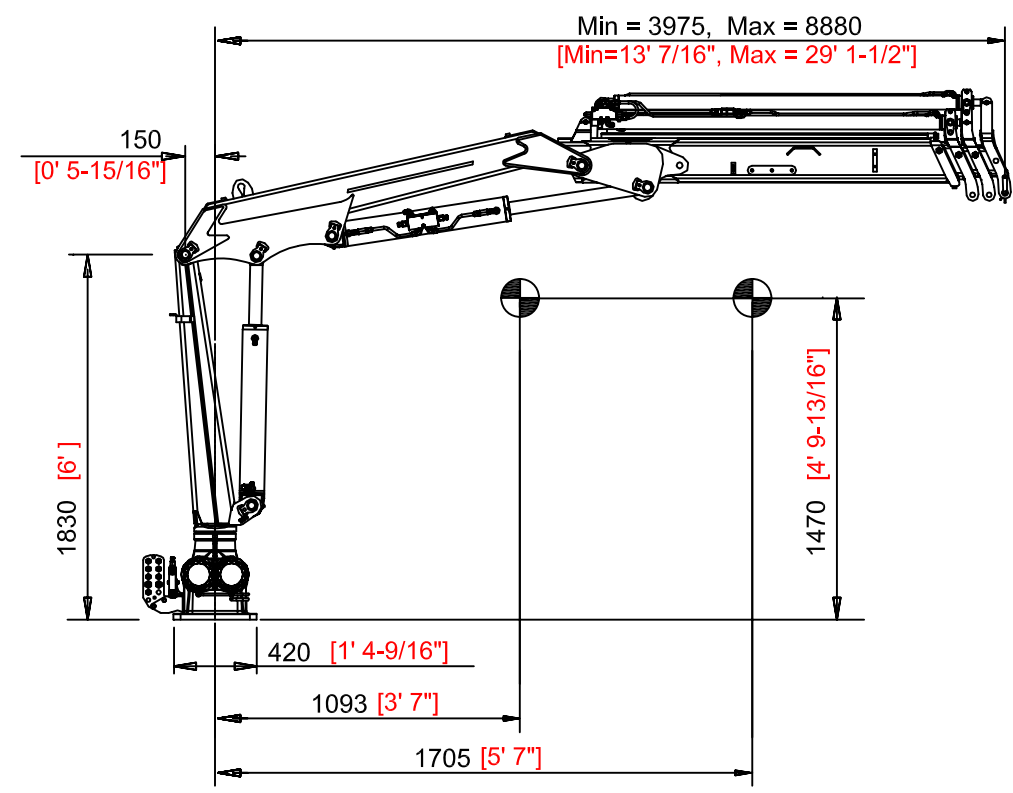
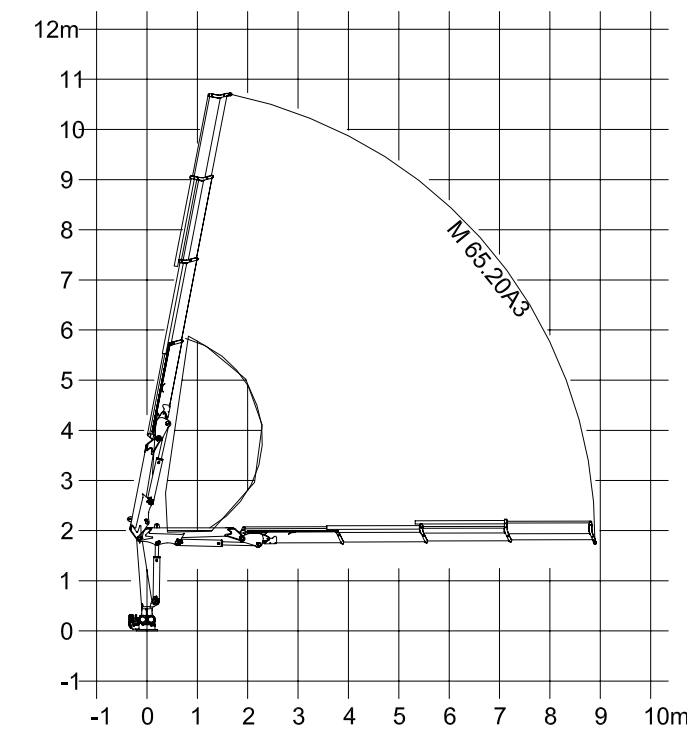


REVISION HISTORY				
ZONE	REV	DESCRIPTION	DATE	APP'D
-	-	RELEASE DWG	6/11/14	DMW



Positions Diagram



Technical Data

Gross Lifting Moment	57.1 kNm [42114 Lbf FT]
Maximum Lifting Dynamic Moment	83.7 kNm [61733.77 Lbf FT]
Max Hydraulic Horizontal Outreach	8.9 m [29' 2-3/8"]
Slewing Angle	422°
Max Rotational Torque	16.24 kNm [11977.99 Lbf FT]
Recommended Volume of Oil in Tank	50 L [13.20 Gallons]
Max Working Oil Pressure	230 bar [3335 PSI]
Recommended Pump Delivery	25 L/min [6.60 Gallons/Min]
Electrical Power Requirement	9.6 kW / 13 CV
Weight of Standard Crane	1070 kg [2359 LBF]

Mounting Base Installation

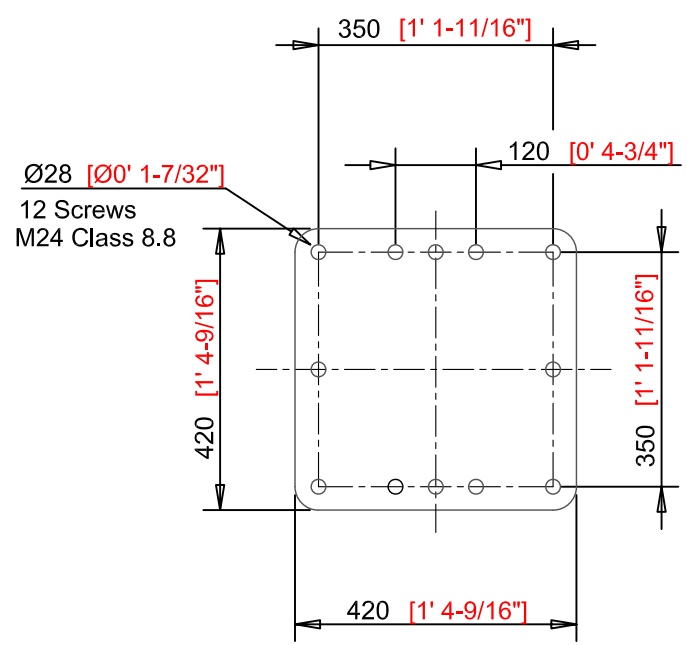
Quantity of Bolts Required	12
Thread Pitch and Class	M24 Class 8.8

Standard Features

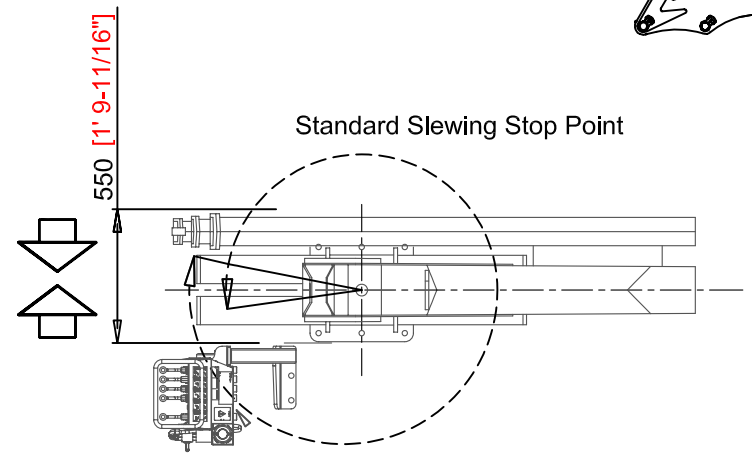
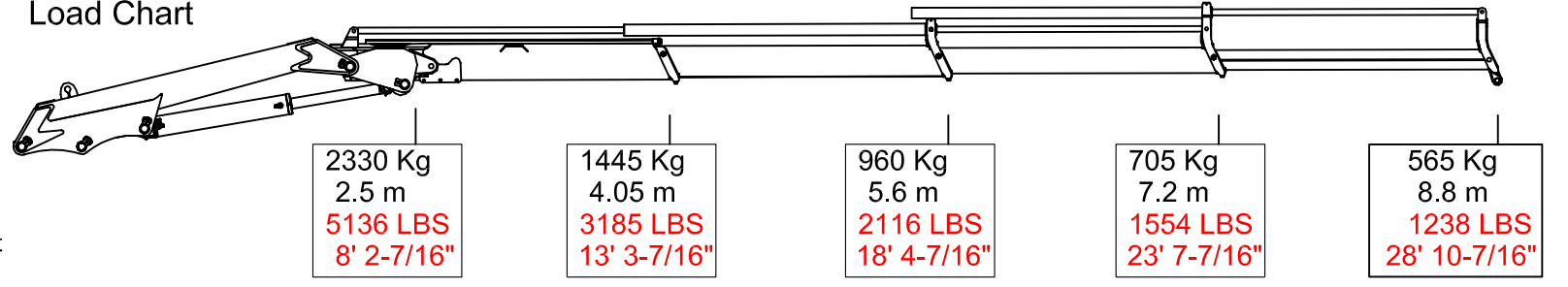
- Built according to DIN 15018-H1-B3 standards.
- Crane structure is sandblasted and metallized.
- Double coat of primer and two layers of paint.
- Special cylinders with Ni-Cr piston rods for marine environments.
- Female fittings in stainless steel, and male fittings in carbon steel.
- Stainless steel hydraulic installation pipes.
- Hoses with rubber "type A" double coat.
- Wheel-rack slewing system, via cylinders, with bronze bushings.
- Safety valves on the cylinders.
- Hydraulic load limiter.
- Emergency stop button.

Optional Features

- Hydraulic winch
- Manual extensions
- Remote control
- Auxiliary hydraulic intakes
- Cab



Load Chart



Standard Control Valve Position

UNLESS OTHERWISE SPECIFIED:
DIMENSIONS ARE IN MILLIMETERS
TOLERANCES:
FRACTIONAL ±
ANGULAR MATCH ± BEND ±
TWO PLACE DECIMAL ±
THREE PLACE DECIMAL ±

PROPRIETARY AND CONFIDENTIAL
THE INFORMATION CONTAINED IN THIS DRAWING IS THE SOLE PROPERTY OF DMW MARINE GROUP, LLC. ANY REPRODUCTION IN PART OR AS A WHOLE WITHOUT THE WRITTEN PERMISSION OF DMW MARINE GROUP, LLC IS PROHIBITED.

NAME	DATE
JL	5/11/14
DW	5/11/14
ENG APPR.	
MFG APPR.	
Q.A.	

DMW MARINE GROUP, LLC
CHESTER SPRING, PA

TITLE:
**MODEL M65.20A3
MARINE CRANE**

SIZE/DWG. NO.
D DMW-M65-20-A3

SCALE: 1:15 WEIGHT: 1070 Kg SHEET 1 OF 1

REV
-