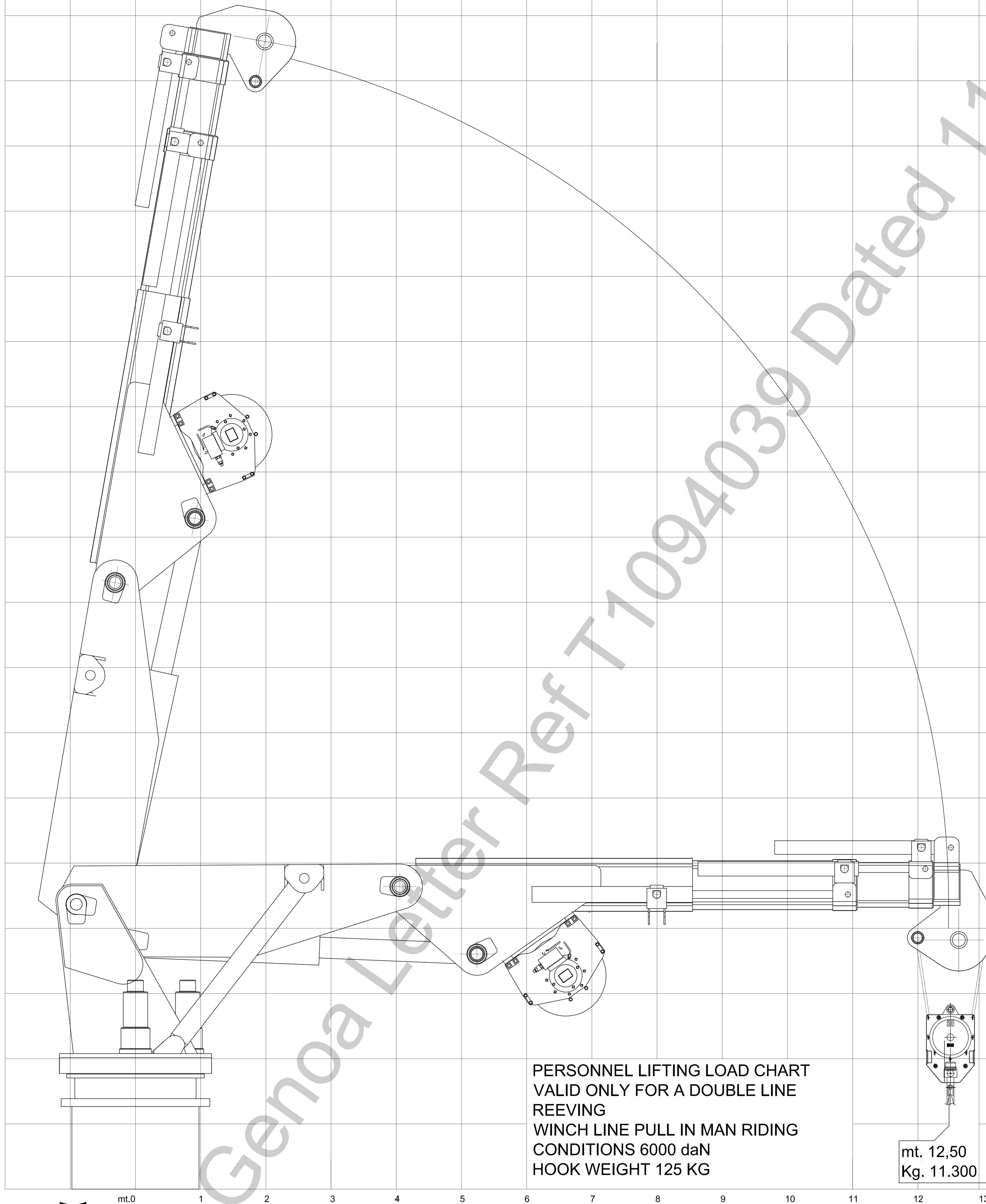


APPROVED

This approval covers only ABS requirements and does not include items not required by ABS. Details of this approval are set forth in the ABS letter.



PERSONNEL LIFTING LOAD CHART
VALID ONLY FOR A DOUBLE LINE
REEVING
WINCH LINE PULL IN MAN RIDING
CONDITIONS 6000 daN
HOOK WEIGHT 125 KG

mt. 12,50
Kg. 11.300

360°
CONTINUUI