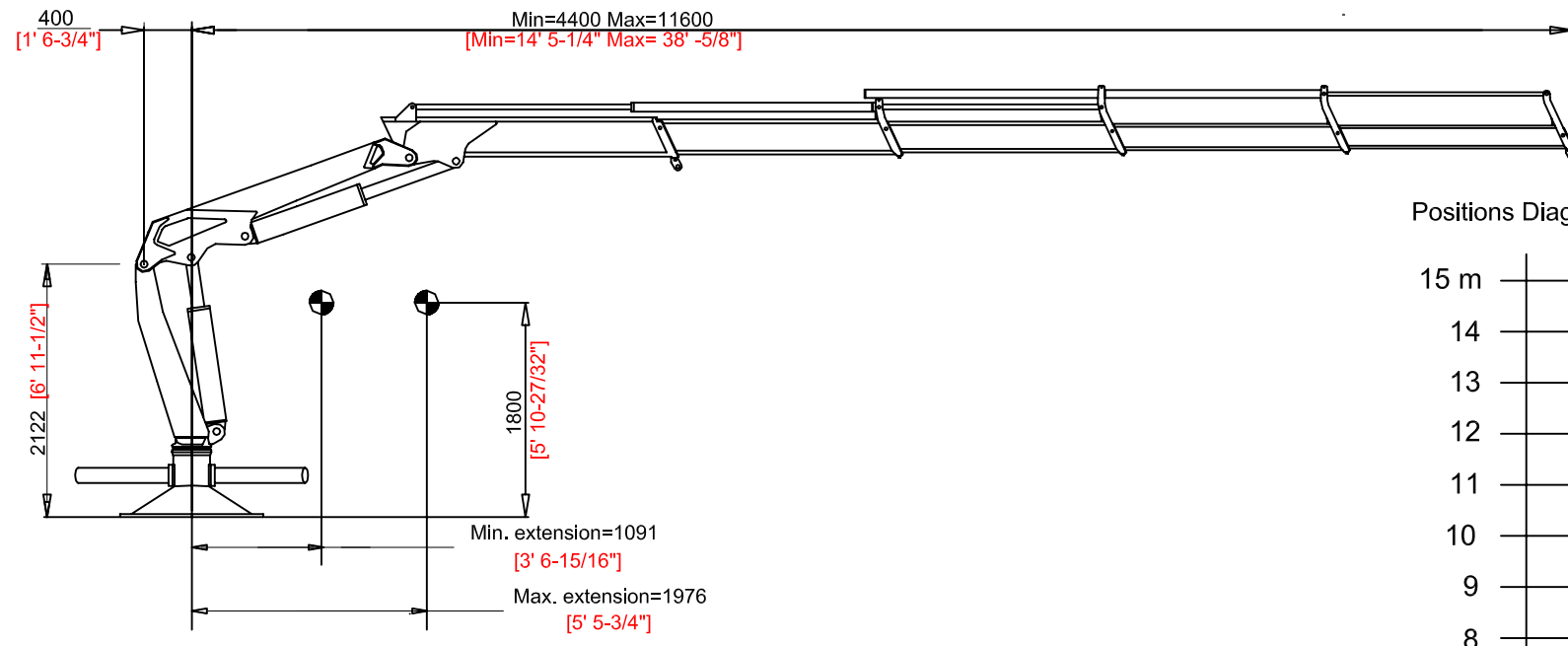
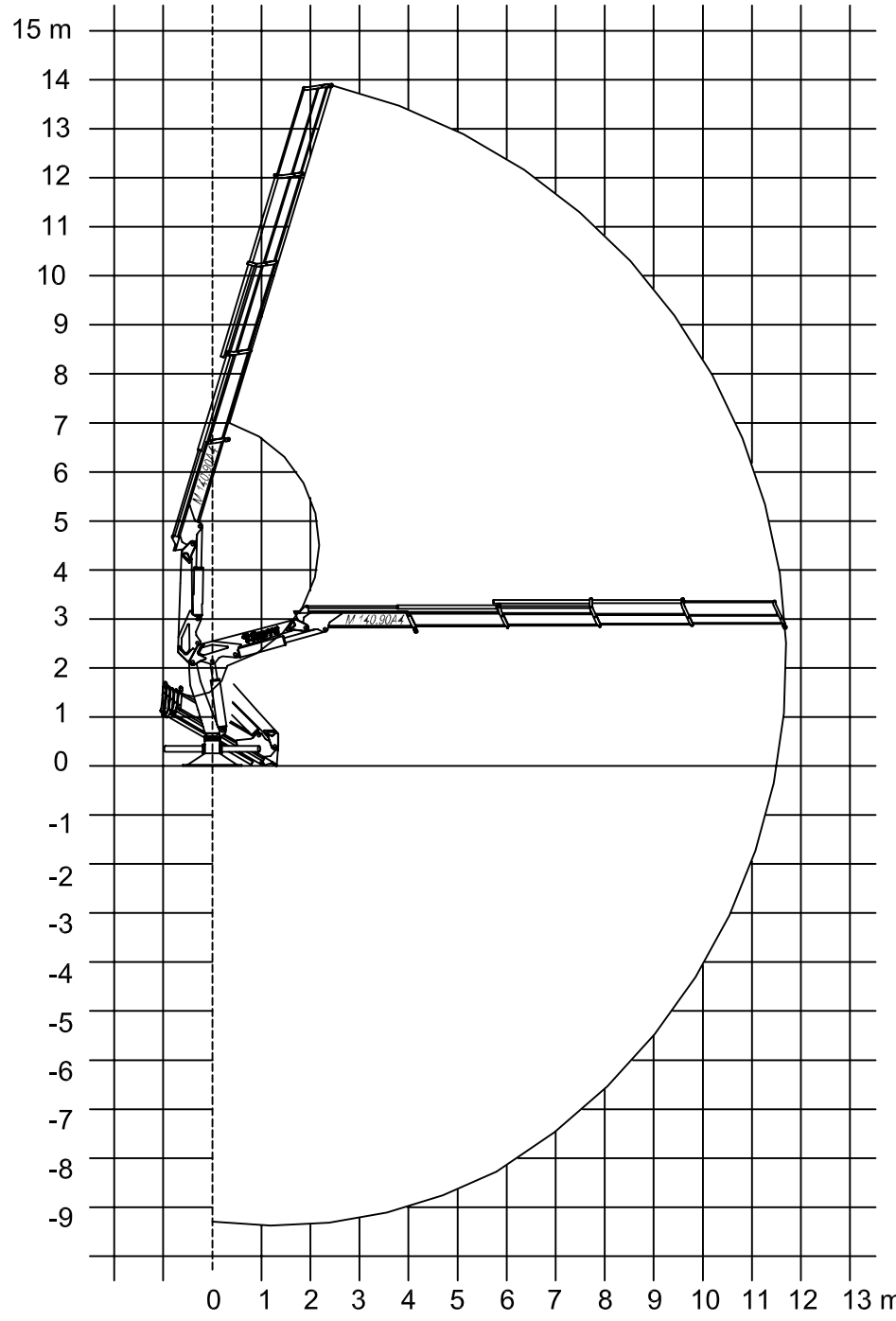


REVISION HISTORY				
ZONE	REV	DESCRIPTION	DATE	APP'D

Retracted and Parked Views (1:30 Scale)



Positions Diagram (1:70 Scale)



Technical Data

Gross Lifting Moment	305.6 kNm [225398.65 Lbf FT]
Maximum Lifting Dynamic Moment	418.2 kNm [308448.02 Lbf FT]
Max Hydraulic Horizontal Outreach	10.2 m [33' 5-9/16"]
Slewing Angle	395°
Max Rotational Torque	55 kNm [40565.85 LBF FT]
Recommended Volume of Oil in Tank	180 L [47.55 Gallons]
Max Working Oil Pressure	240 bar [3481 PSI]
Recommended Pump Delivery	70 L/min [18.49 Gallons/Min]
Electrical Power Requirement	29.4 kW / 40 CV
Weight of Standard Crane	3810 kg [8400 LBF]

Mounting Base Installation

Quantity of Bolts Required	20
Thread Pitch and Class	M24 x 120 Class 10.9

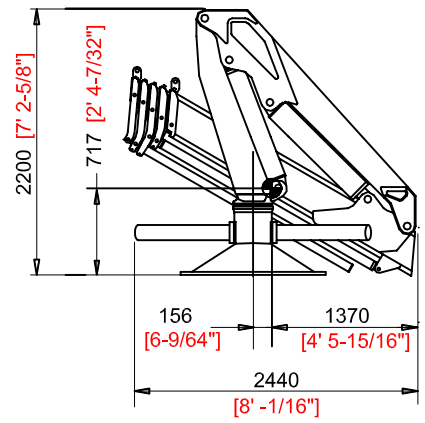
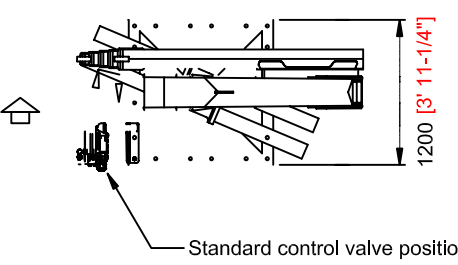
Standard Features

- Built according to DIN 15018-H1-B3 standards.
- Crane structure is sandblasted and metallized.
- Double coat of primer and two layers of paint.
- Special cylinders with Ni-Cr piston rods for marine environments.
- Female fittings in stainless steel, and male fittings in carbon steel.
- Stainless steel hydraulic installation pipes.
- Hoses with rubber "Type A" double coat.
- Wheel-rack slewing system, via cylinders, with bronze bushings.
- Safety valves on the cylinders.
- Hydraulic load limiter.
- Emergency stop button.

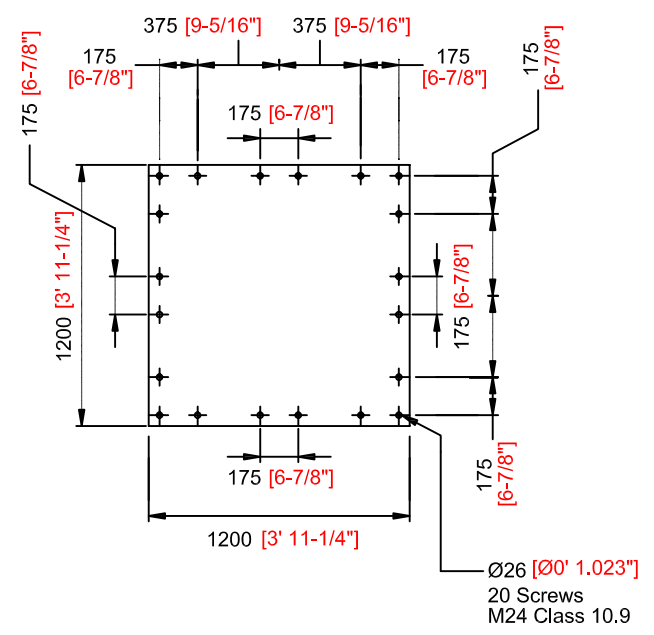
Optional Features

- Hydraulic winch
- Manual extensions
- Remote control
- Auxiliary hydraulic intakes
- Cab

Standard slewing stop point



Mounting Base Dimensions (1:6 Scale)



Load Chart

4825 Kg	2925 Kg	1950 Kg	1425 Kg	1100 Kg	925 Kg
2.6 m	4.4 m	6.2 m	8.1 m	9.8 m	11.6 m
10637 LBS	6448 LBS	4298 LBS	3141 LBS	2425 LBS	2039 LBS
8' 6-11/32"	14' 5-7/32"	20' 4-3/32"	26' 6-7/8"	32' 1-13/32"	38' -11/16"

PROPRIETARY AND CONFIDENTIAL
 THE INFORMATION CONTAINED IN THIS DRAWING IS THE SOLE PROPERTY OF DMW MARINE GROUP, LLC. ANY REPRODUCTION IN PART OR AS A WHOLE WITHOUT THE WRITTEN PERMISSION OF DMW MARINE GROUP, LLC IS PROHIBITED.

UNLESS OTHERWISE SPECIFIED: DIMENSIONS ARE IN MILLIMETERS TOLERANCES: FRACTIONAL ± ANGULAR: MACH ± BEND ± TWO PLACE DECIMAL ± THREE PLACE DECIMAL ±	DRAWN JSL 12/10/13	NAME JSL	DATE 12/10/13
INTERPRET GEOMETRIC TOLERANCING PER: FINISH FIRST ANGLE PROJECTION	CHECKED DW	ENG APPR. MFG APPR.	COMMENTS:

DMW MARINE GROUP, LLC OESTER SPRINGS, PA	
TITLE: MODEL M140.90A4 MARINE CRANE	
SIZE/DWG. NO. D DMG M140.90A4	REV -
SCALE=1:40 WEIGHT: 2175 Kg SHEET 1 OF 1	

DMG M140.90A4