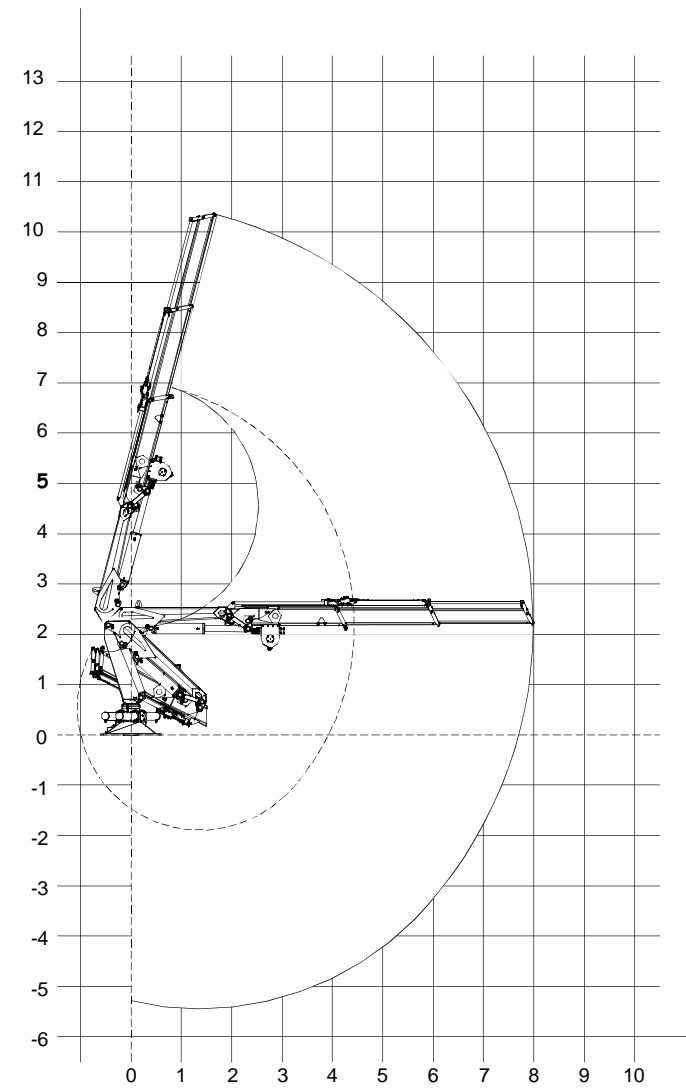


| REVISION HISTORY |     |             |      |       |
|------------------|-----|-------------|------|-------|
| ZONE             | REV | DESCRIPTION | DATE | APP'D |
|                  |     |             |      |       |

Positions Diagram (1:75 Scale)



**Technical Data**

|                                   |                              |
|-----------------------------------|------------------------------|
| Gross Lifting Moment              | 168.9 kNm [124574.06 Lbf FT] |
| Maximum Lifting Dynamic Moment    | 244.7 kNm [180481.18 Lbf FT] |
| Max Hydraulic Horizontal Outreach | 7.9 m [25' 11"]              |
| Slewing Angle                     | 409°                         |
| Max Rotational Torque             | 51.7 kNm [38131.91 Lbf FT]   |
| Recommended Volume of Oil in Tank | 115 L [30.38 Gallons]        |
| Max Working Oil Pressure          | 210 bar [3146 PSI]           |
| Recommended Pump Delivery         | 40 L/min [10.57 Gallons/Min] |
| Electrical Power Requirement      | 16.5 kW / 22.4 CV            |
| Weight of Standard Crane          | 2630 kg [5798 LBF]           |

**Mounting Base Installation**

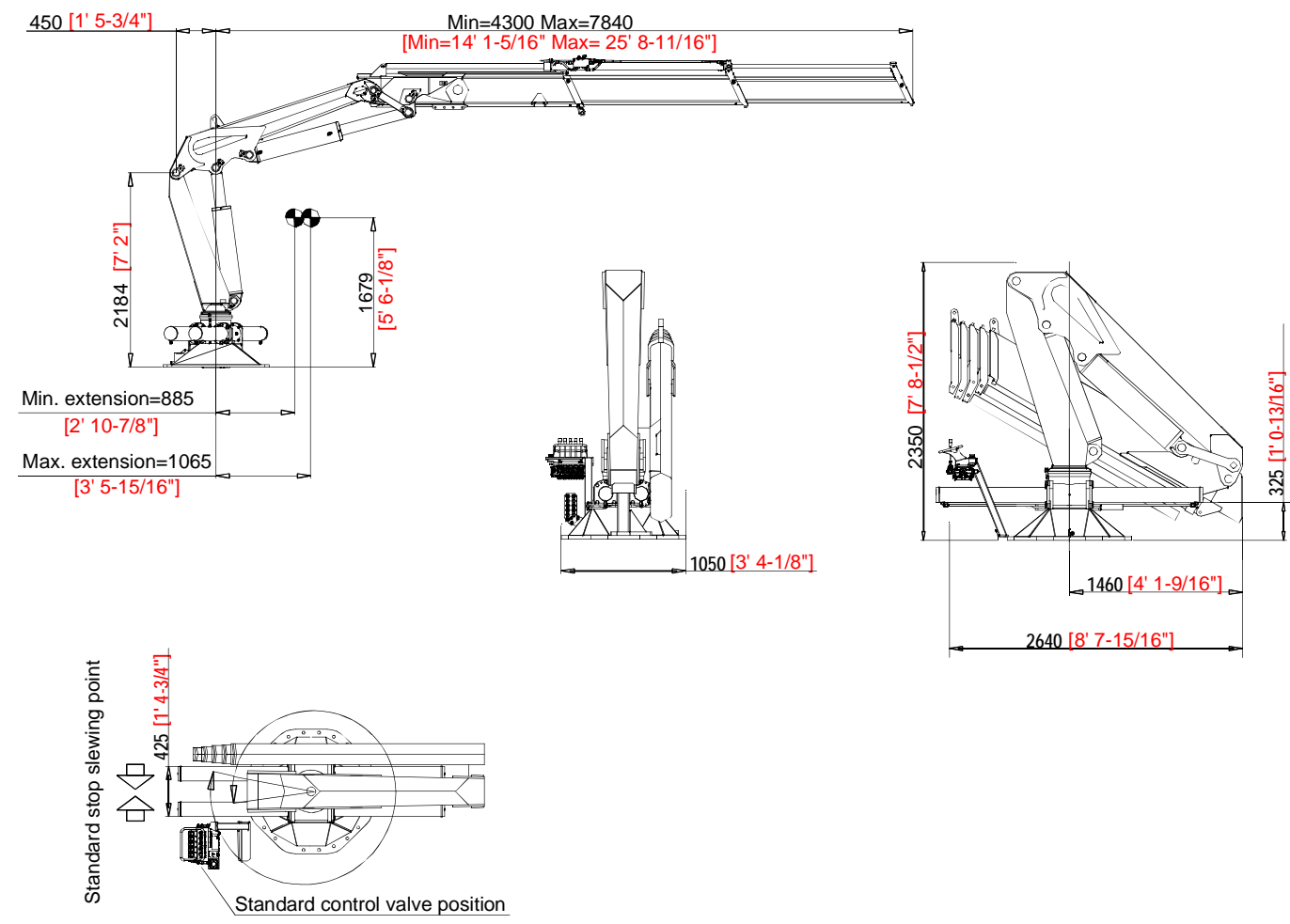
|                            |               |
|----------------------------|---------------|
| Quantity of Bolts Required | 24            |
| Thread Pitch and Class     | M24 Class 8.8 |

**Standard Features**

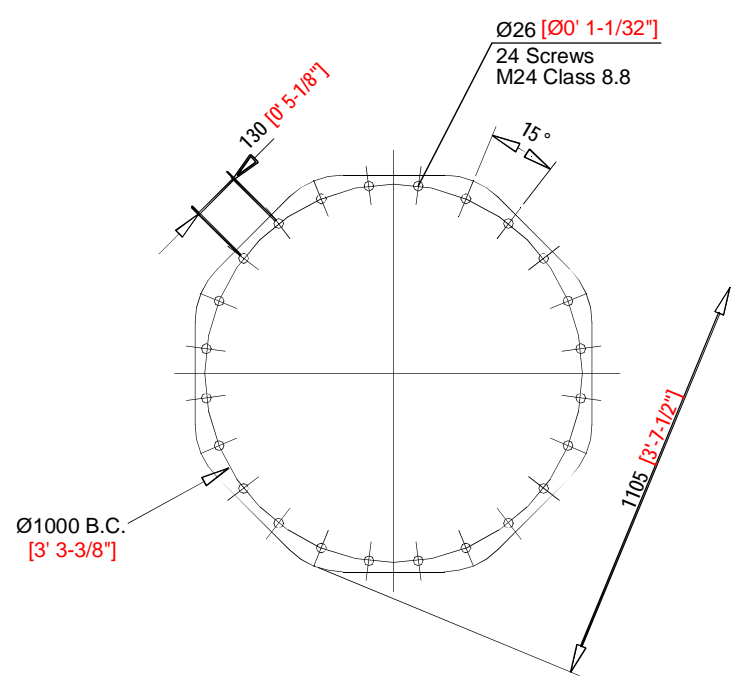
- Built according to DIN 15018-H1-B3 standards.
- Crane structure is sandblasted and metallized.
- Double coat of primer and two layers of paint.
- Special cylinders with Ni-Cr piston rods for marine environments.
- Female fittings in stainless steel, and male fittings in carbon steel.
- Stainless steel hydraulic installation pipes.
- Hoses with rubber "Type A" double coat.
- Wheel-rack slewing system, via cylinders, with bronze bushings.
- Safety valves on the cylinders.
- Hydraulic load limiter.
- Emergency stop button.

**Optional Features**

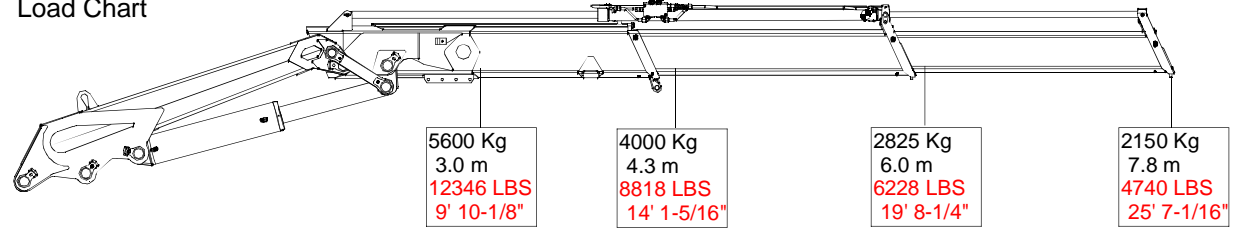
- Hydraulic winch
- Manual extensions
- Remote control
- Auxiliary hydraulic intakes
- Cab



Mounting Base Dimensions (1:10 Scale)



Load Chart



|  |  |                   |                            |  |
|--|--|-------------------|----------------------------|--|
| UNLESS OTHERWISE SPECIFIED:<br>DIMENSIONS ARE IN MILLIMETERS<br>TOLERANCES:<br>FRACTIONAL ±<br>ANGULAR: BACH ± BEND ±<br>TWO PLACE DECIMAL ±<br>THREE PLACE DECIMAL ±  |  | NAME<br>RJS<br>DW | DATE<br>9/28/13<br>9/28/13 | DMW MARINE GROUP, LLC<br>CRESTER SPRING, PA                |
| INTERPRET GEOMETRIC TOLERANCING PER:<br>FIRST ANGLE PROJECTION   |  | Q.A.<br>          | COMMENTS:<br>              |  |
| PROPRIETARY AND CONFIDENTIAL<br>THE INFORMATION CONTAINED IN THIS DRAWING IS THE SOLE PROPERTY OF<br>DMW MARINE GROUP, LLC. ANY<br>REPRODUCTION IN PART OR AS A WHOLE<br>WITHOUT THE WRITTEN PERMISSION OF<br>DMW MARINE GROUP, LLC IS PROHIBITED. |  |                   |                            | TITLE:<br><b>MODEL M170.90A2<br/>         MARINE CRANE</b> |
| SIZE/DWG. NO.<br><b>D DMG M170.90A2</b>  |  |                   | REV<br>-                   | SCALE=1:40 WEIGHT: 2630 Kg SHEET 1 OF 1                    |