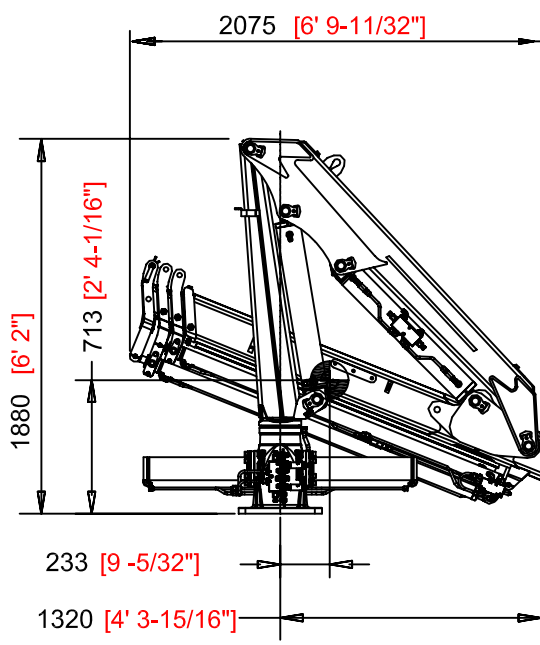
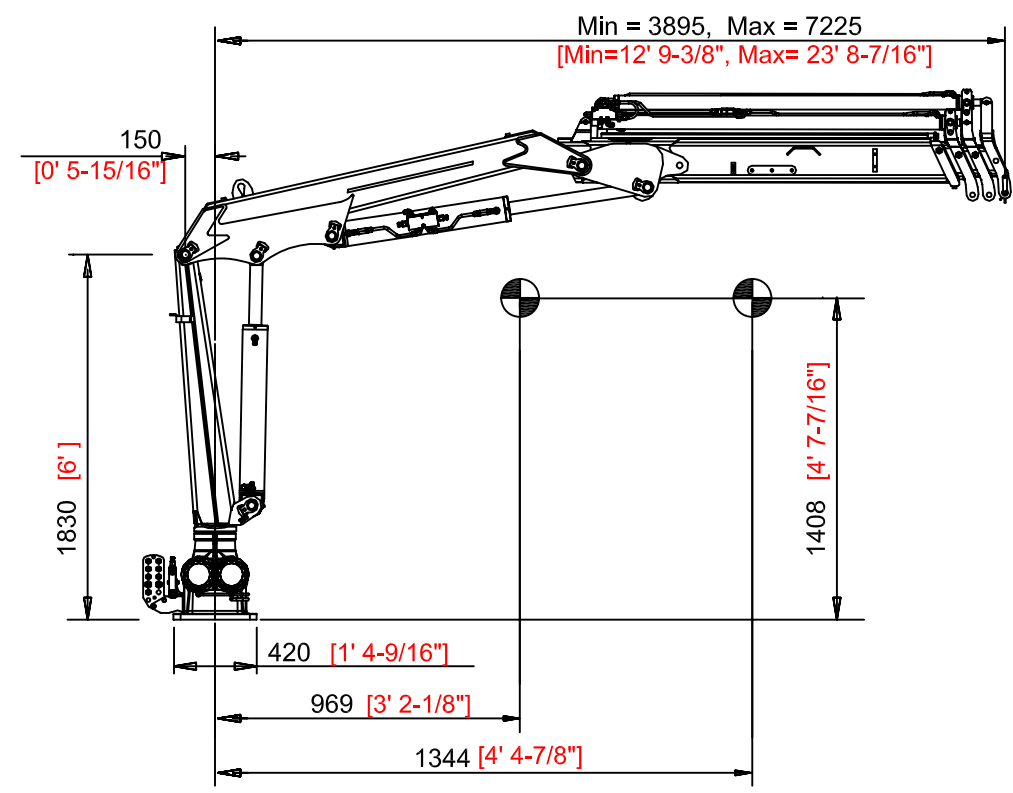
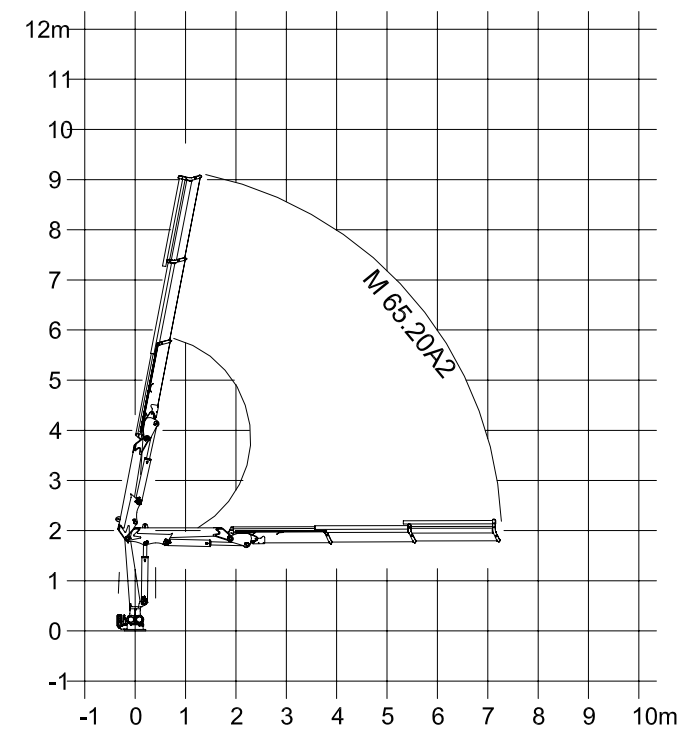


REVISION HISTORY				
ZONE	REV	DESCRIPTION	DATE	APP'D
-	-	RELEASE DWG	6/11/14	DMW



### Positions Diagram



### Technical Data

Gross Lifting Moment	59.0 kNm [43516.04 Lbf FT]
Maximum Lifting Dynamic Moment	83.7 kNm [61733.77 Lbf FT]
Max Hydraulic Horizontal Outreach	7.2 m [23' 7-7/16"]
Slewing Angle	422°
Max Rotational Torque	16.24 kNm [11977.99 Lbf FT]
Recommended Volume of Oil in Tank	50 L [13.20 Gallons]
Max Working Oil Pressure	230 bar [3335 PSI]
Recommended Pump Delivery	25 L/min [6.60 Gallons/Min]
Electrical Power Requirement	9.6 kW / 13 CV
Weight of Standard Crane	990 kg [2182 LBF]

### Mounting Base Installation

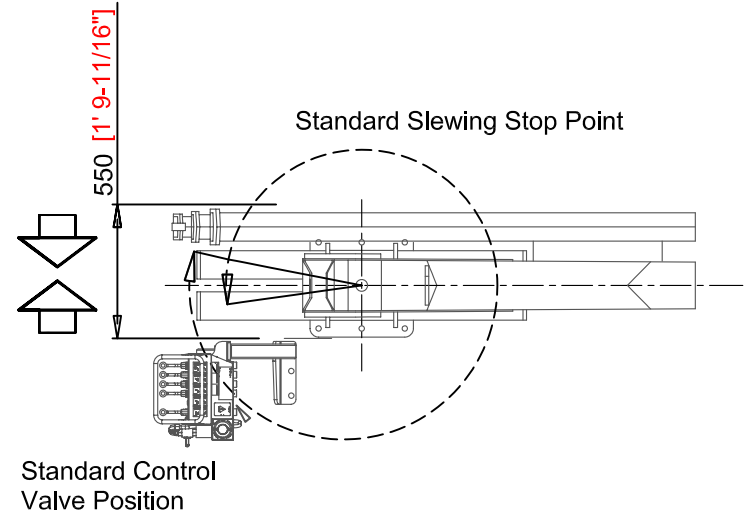
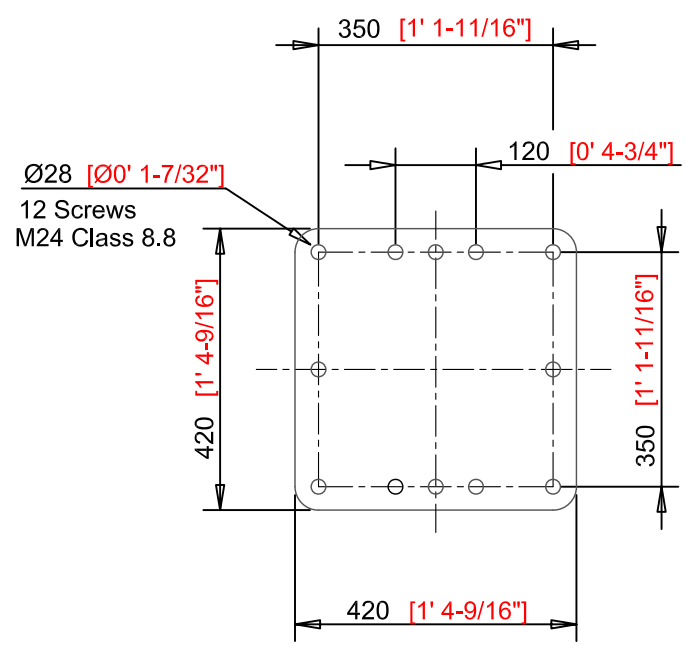
Quantity of Bolts Required	12
Thread Pitch and Class	M24 Class 8.8

### Standard Features

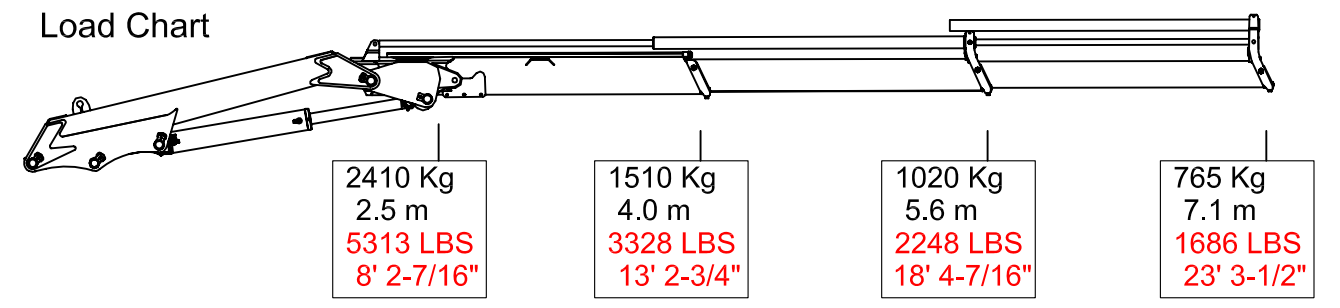
- Built according to DIN 15018-H1-B3 standards.
- Crane structure is sandblasted and metallized.
- Double coat of primer and two layers of paint.
- Special cylinders with Ni-Cr piston rods for marine environments.
- Female fittings in stainless steel, and male fittings in carbon steel.
- Stainless steel hydraulic installation pipes.
- Hoses with rubber "type A" double coat.
- Wheel-rack slewing system, via cylinders, with bronze bushings.
- Safety valves on the cylinders.
- Hydraulic load limiter.
- Emergency stop button.

### Optional Features

- Hydraulic winch
- Manual extensions
- Remote control
- Auxiliary hydraulic intakes
- Cab



### Load Chart



PROPRIETARY AND CONFIDENTIAL  
THE INFORMATION CONTAINED IN THIS DRAWING IS THE SOLE PROPERTY OF DMW MARINE GROUP, LLC. ANY REPRODUCTION IN PART OR AS A WHOLE WITHOUT THE WRITTEN PERMISSION OF DMW MARINE GROUP, LLC IS PROHIBITED.

UNLESS OTHERWISE SPECIFIED:	DRAWN	NAME	DATE
DIMENSIONS ARE IN MILLIMETERS	JL		5/11/14
TOLERANCES:	CHECKED	DW	5/11/14
FRACTIONAL ±	ENG APPR.		
ANGULARS MACH ± BEND ±	MFG APPR.		
TWO PLACE DECIMAL ±	Q.A.		
THREE PLACE DECIMAL ±	COMMENTS:		
INTERPRET GEOMETRIC TOLERANCING PER:			
FIRST ANGLE PROJECTION			

DMW MARINE GROUP, LLC CHESTER SPRING, PA	
TITLE: <b>MODEL M65.20A2 MARINE CRANE</b>	
SIZE/DWG. NO. <b>D</b>	REV -
SCALE=1:15	WEIGHT: 990 Kg
SHEET 1 OF 1	