



DMWMARINEGROUP

dmwmarinegroup.com

SPECIFICATIONS

TECHNICAL DATA

| | | M125.20A1 | M125.20A2 | M125.20A3 | M125.20A4 |
|-----------------------------------|-------|-----------|-----------|-----------|-----------|
| Gross Lifting Moment | kNm | 124.2 | 119.5 | 114.9 | 110.7 |
| Max Hydraulic Horizontal Outreach | m | 6.3 | 8.2 | 10.1 | 11.6 |
| Slewing Angle | ° | 430 | 430 | 430 | 430 |
| Max Rotational Torque | kNm | 26.1 | 26.1 | 26.1 | 26.1 |
| Max Working Oil Pressure | bar | 210 | 210 | 210 | 210 |
| Recommended Pump Delivery | L/min | 40 | 40 | 40 | 40 |
| Mass of Standard Crane | kg | 1735 | 1865 | 1990 | 2100 |

MOUNTING BASE INSTALLATION

| | |
|----------------------------|----------------|
| Quantity of Bolts Required | 16 |
| Thread Pitch and Class | M24 Class 10.9 |

STANDARD FEATURES

- Built according to DIN 15018-H1-B3 standards.
- Crane structure is sandblasted and metallized.
- Double coat of primer and two layers of paint.
- Special cylinders with Ni-Cr piston rods for marine environments.
- Female fittings in stainless steel, and male fittings in carbon steel.
- Stainless steel hydraulic installation pipes.
- Hoses with rubber "type A" double coat.
- Wheel-rack slewing system, via cylinders, with bronze bushings.
- Safety valves on the cylinders.
- Hydraulic load limiter.
- Emergency stop button.

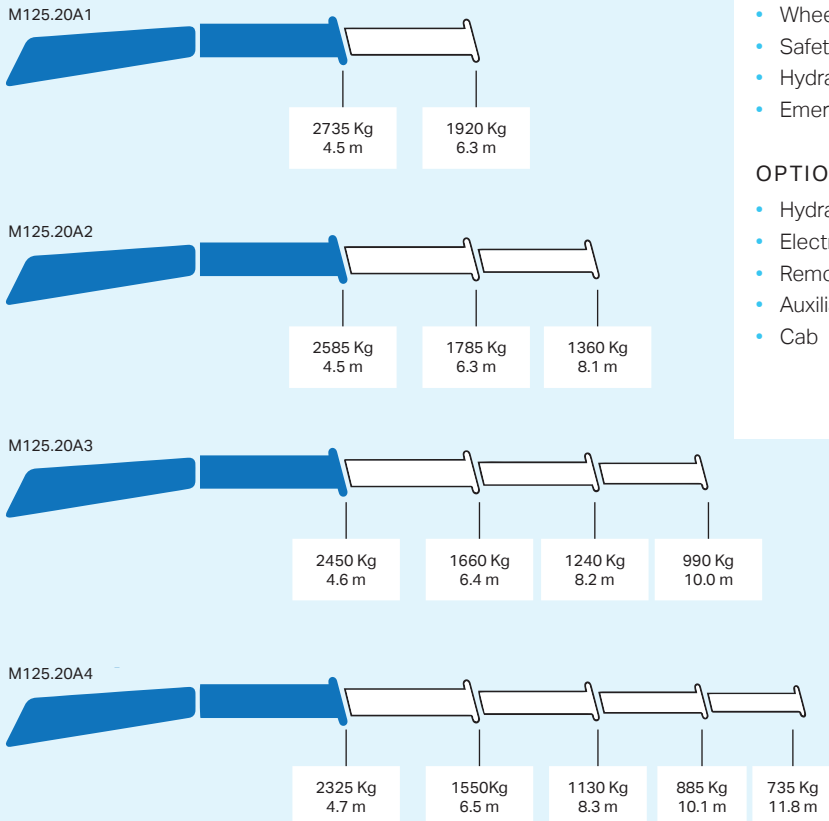
OPTIONAL FEATURES

- Hydraulic winch
- Electric, diesel or gasoline HPU
- Remote control
- Auxiliary hydraulic intakes
- Cab

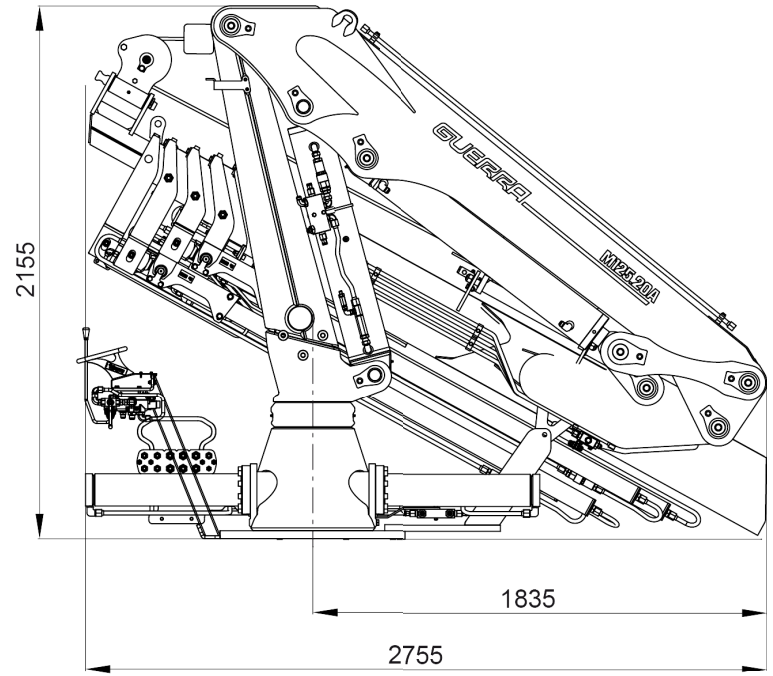
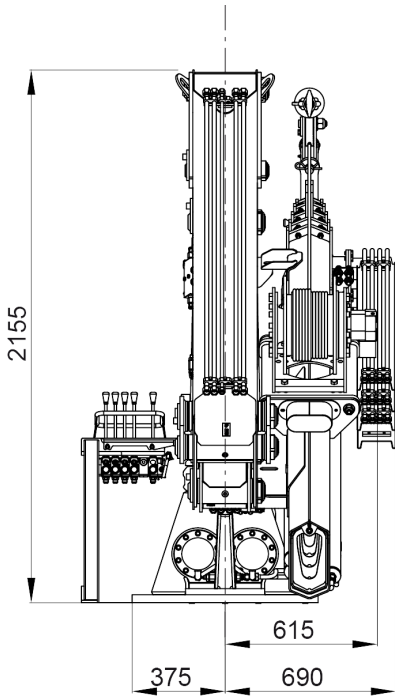


M125.20A MARINE CRANE

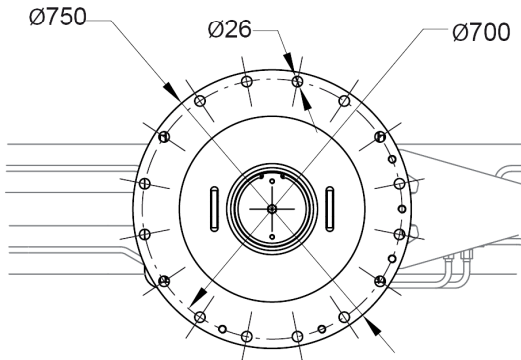
LOAD CHART



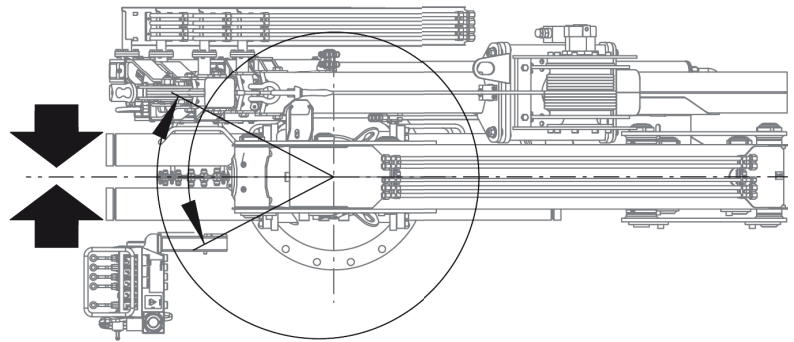
DIMENSIONS



16 Tornillos / Parafusos
Vis / Screws
M24 - 10.9



Punto muerto de giro estandar / Ponto morto de rotação standard
Point mort de rotation standard / Standard stop slewing point



Puesto de mando estandar / Posto de operação standard
Poste de command standard / Standard control valve position

POSITION DIAGRAM

