



DMWMARINEGROUP

dmwmarinegroup.com



M40.90A MARINE CRANE

M40.90A These high quality marine cranes are built in accordance with DIN 15018-H1-B3 and range in size from 21.1 kNm (15,562 lbf.ft) to 593.5 kNm (437,742 Lbf.Ft). The cranes can be used in a wide variety of commercial, academic, and military applications within the marine industry.

SPECIFICATIONS

TECHNICAL DATA		M40.90A1	M40.90.A2
Gross Lifting Moment	kNm	38.77	37.53
Maximum Lifting Dynamic Moment	kNm	53.29	53.23
Max Hydraulic Horizontal Outreach	m	4,5	5,5
Slewing Angle	°	400	400
Max Rotational Torque	kNm	15.98	15.98
Recommended Volume of Oil in Tank	l	20	20
Max Working Oil Pressure	bar	195	195
Recommended Pump Delivery	l/min	20	20
Electrical Power Requirement	kW/CV	7.64 / 10.39	7.64 / 10.39
Mass of Standard Crane	kg	730	770

MOUNTING BASE INSTALLATION

Quantity of Bolts Required	8
Thread Pitch and Class	M20 Class 8.8

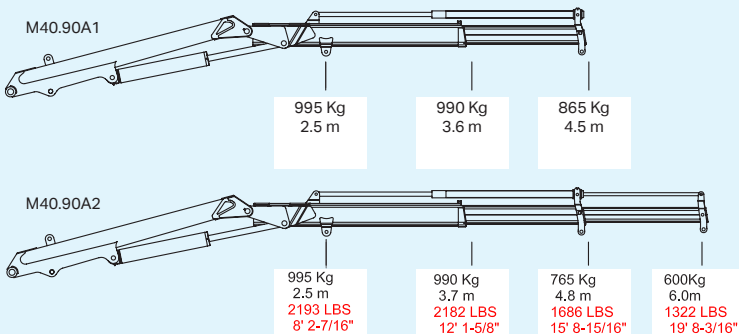
STANDARD FEATURES

- Built according to DIN 15018-H1-B3 standards.
- Crane structure is sandblasted and metallized.
- Double coat of primer and two layers of paint.
- Special cylinders with Ni-Cr piston rods for marine environments.
- Female fittings in stainless steel, and male fittings in carbon steel.
- Stainless steel hydraulic installation pipes and hoses, except for control valve and tube fittings.
- Hoses with rubber "type A" double coat.
- Wheel-rack slewing system, via cylinders, with bronze bushings.
- Safety valves on the cylinders .
- Emergency stop button.

OPTIONAL FEATURES

- Hydraulic winch
- Manual extensions
- Remote control
- Auxiliary hydraulic intakes
- Cab

LOAD CHART



DIMENSIONS

