



# DMWMARINEGROUP

dmwmarinegroup.com



## M65.20A MARINE CRANE

### SPECIFICATIONS

TECHNICAL DATA		M65.20A1	M65.20A2	M65.20A3
Gross Lifting Moment	kNm	61.13	59	57.1
Maximum Lifting Dynamic Moment	kNm	83.7	83.7	83.7
Max Hydraulic Horizontal Outreach	m	5.5	7.2	8.9
Slewing Angle	°	422	422	422
Max Rotational Torque	kNm	16.24	16.24	16.24
Recommended Volume of Oil in Tank	L	50	50	50
Max Working Oil Pressure	bar	230	230	230
Recommended Pump Delivery	L/min	25	25	25
Electrical Power Requirement	kW/CV	9.6	9.6	9.6
Mass of Standard Crane	kg	900	990	1070

### MOUNTING BASE INSTALLATION

Quantity of Bolts Required	12
Thread Pitch and Class	M24 Class 8.8

### STANDARD FEATURES

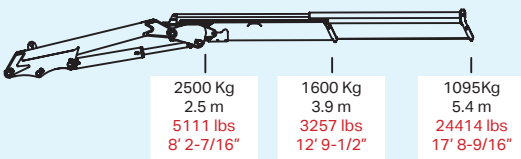
- Built according to DIN 15018-H1-B3 standards.
- Crane structure is sandblasted and metallized.
- Double coat of primer and two layers of paint.
- Special cylinders with Ni-Cr piston rods for marine environments. Female fittings in stainless steel, and male fittings in carbon steel. Stainless steel hydraulic installation pipes.
- Hoses with rubber "type A" double coat.
- Wheel-rack slewing system, via cylinders, with bronze bushings. Safety valves on the cylinders.
- Hydraulic load limiter.
- Emergency stop button.

### OPTIONAL FEATURES

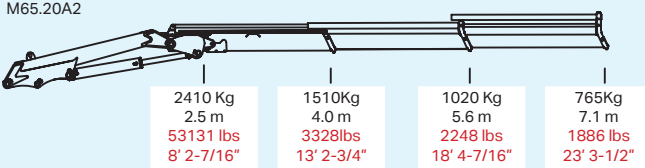
- Hydraulic winch
- Manual extensions
- Remote control
- Auxiliary hydraulic intakes
- Cab

### LOAD CHART

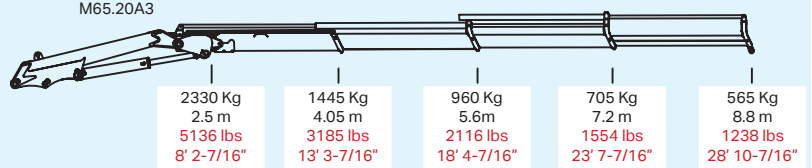
M65.20A1



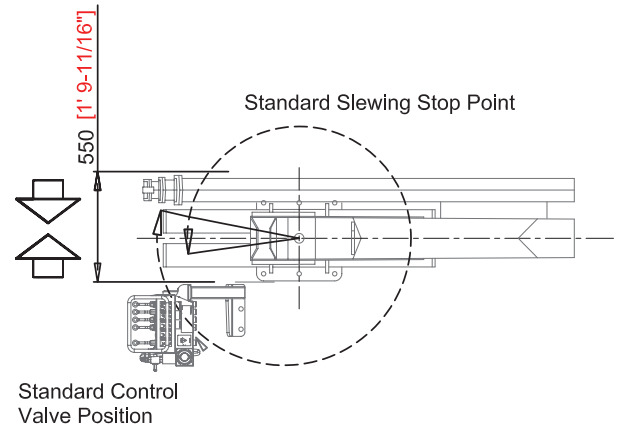
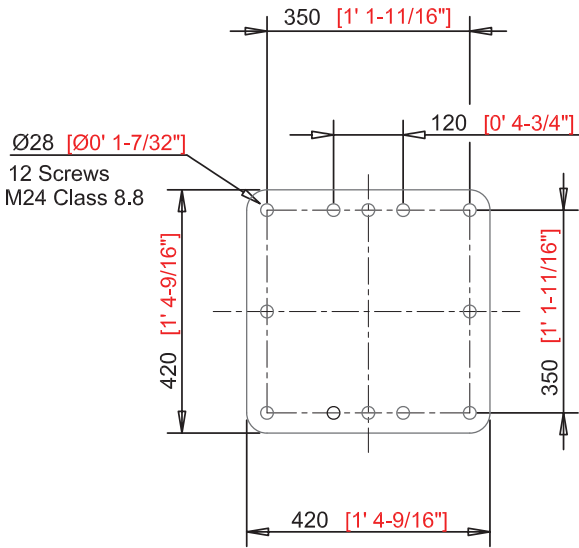
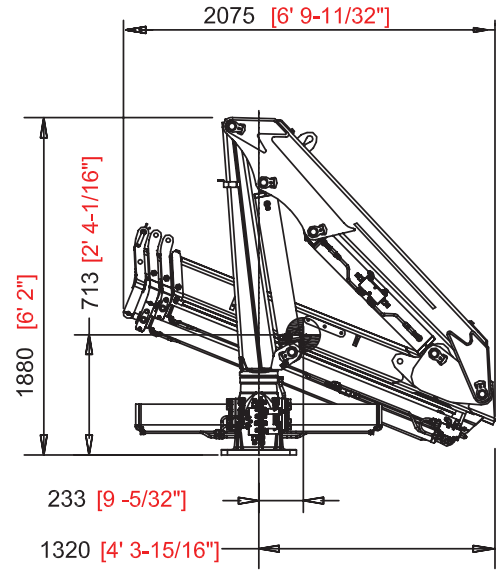
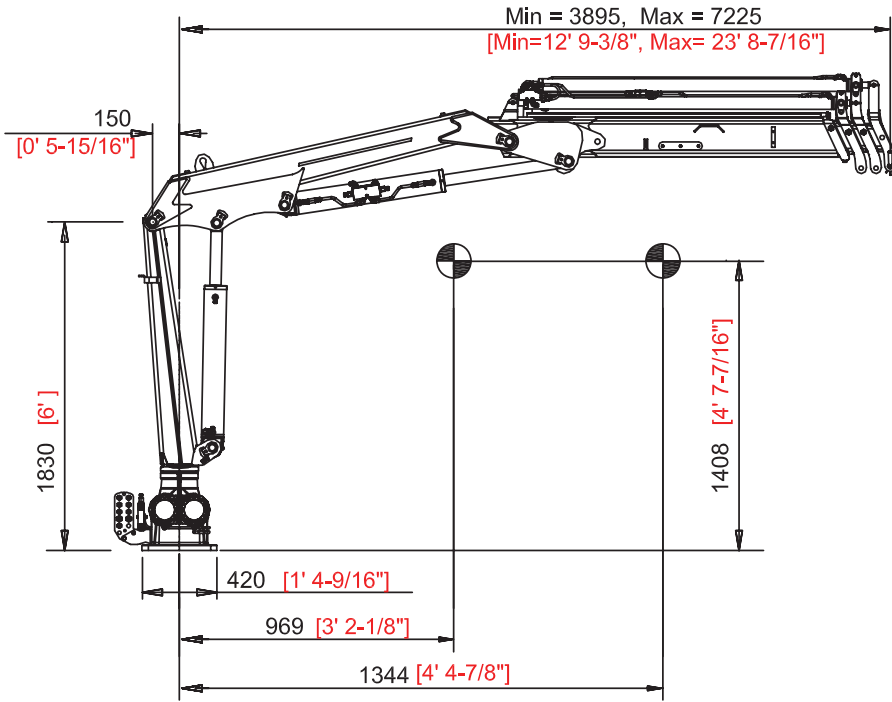
M65.20A2



M65.20A3



# DIMENSIONS



# POSITION DIAGRAM

