



DMWMARINEGROUP

dmwmarinegroup.com



M660.24A MARINE CRANE

SPECIFICATIONS

TECHNICAL DATA	M660.24A1	M660.24A2	M660.24A3	M660.24A4	M660.24A5	
Gross Lifting Moment	kNm	666.3	614.7	618.0	593.5	574.1
Max Hydraulic Horizontal Outreach	m	9.0	11.7	14.4	17.1	19.8
Slewing Angle	°	cont	cont	cont	cont	cont
Max Rotational Torque	kNm	79.3	79.3	79.3	79.3	79.3
Max Working Oil Pressure	bar	240	240	240	240	240
Recommended Pump Delivery	L/min	100	100	100	100	100
Mass of Standard Crane	kg	6250	6745	7220	7675	8000

MOUNTING BASE INSTALLATION

Quantity of Bolts Required	32
Thread Pitch and Class	M27 Class 10.9

STANDARD FEATURES

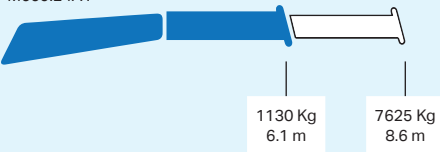
- Built according to DIN 15018-H1-B3 standards.
- Crane structure is sandblasted and metallized.
- Double coat of primer and two layers of paint.
- Special cylinders with Ni-Cr piston rods for marine environments.
- Female fittings in stainless steel, and male fittings in carbon steel.
- Stainless steel hydraulic installation pipes.
- Hoses with rubber "type A" double coat.
- Wheel-rack slewing system, via cylinders, with bronze bushings.
- Safety valves on the cylinders.
- Hydraulic load limiter.
- Emergency stop button.

OPTIONAL FEATURES

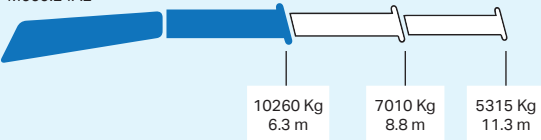
- Hydraulic winch
- Electric, diesel or gasoline HPU
- Remote control
- Auxiliary hydraulic intakes
- Cab

LOAD CHART

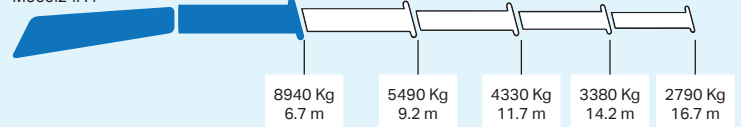
M660.24A1



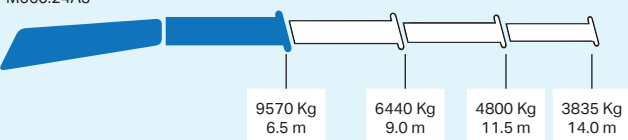
M660.24A2



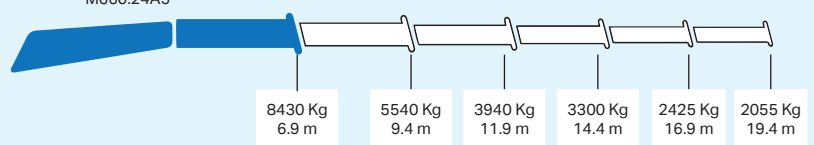
M660.24A4



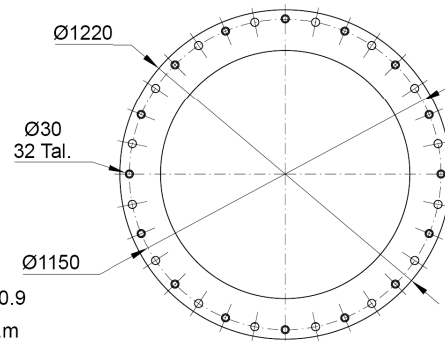
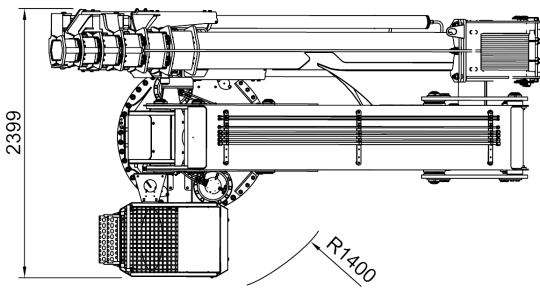
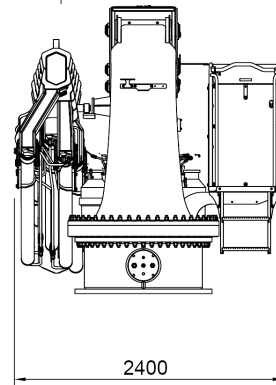
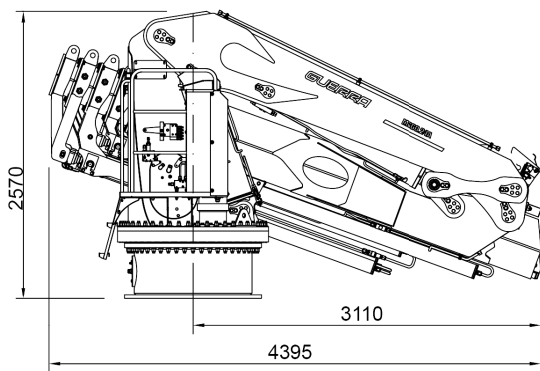
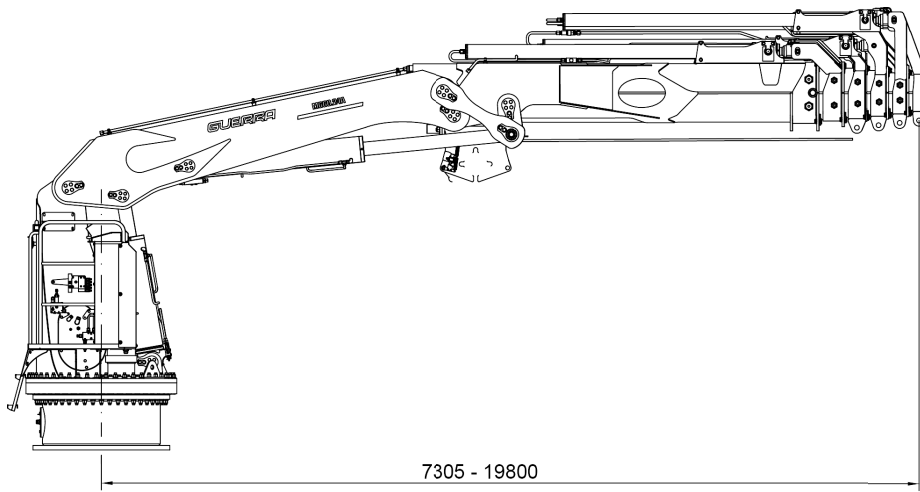
M660.24A3



M660.24A5



DIMENSIONS



POSITION DIAGRAM

