



# DMWMARINEGROUP

dmwmarinegroup.com



## M95.20A MARINE CRANE

### SPECIFICATIONS

TECHNICAL DATA		M95.20A1	M95.20A2	M95.20A3	M95.20A4
Gross Lifting Moment	kNm	88.7	85.1	116.2	116.2
Maximum Lifting Dynamic Moment	kNm	124.2	124.5	124.2	123.7
Max Hydraulic Horizontal Outreach	m	6.0	7.9	9.7	11.6
Slewing Angle	°	415	415	415	415
Max Rotational Torque	kNm	22.4	22.4	22.4	22.4
Recommended Volume of Oil in Tank	L	45	45	45	45
Max Working Oil Pressure	bar	240	240	240	240
Recommended Pump Delivery	L/min	35	35	35	35
Electrical Power Requirement	kW/CV	14.0/19	14.0/19	14.0/19	14.0/19
Mass of Standard Crane	kg	1225	1340	1450	1550

### MOUNTING BASE INSTALLATION

Quantity of Bolts Required	12
Thread Pitch and Class	M24 x 200 Class 10.9

### STANDARD FEATURES

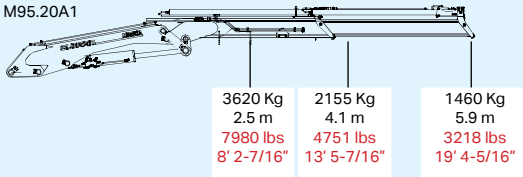
- Built according to DIN 15018-H1-B3 standards.
- Crane structure is sandblasted and metallized.
- Double coat of primer and two layers of paint.
- Special cylinders with Ni-Cr piston rods for marine environments.
- Female fittings in stainless steel, and male fittings in carbon steel.
- Stainless steel hydraulic installation pipes.
- Hoses with rubber "type A" double coat.
- Wheel-rack slewing system, via cylinders, with bronze bushings.
- Safety valves on the cylinders.
- Hydraulic load limiter.
- Emergency stop button.

### OPTIONAL FEATURES

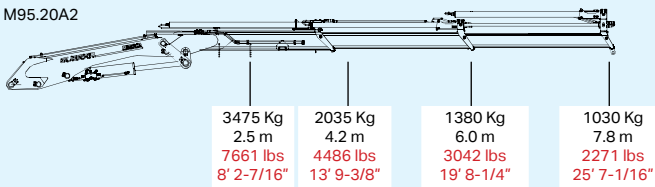
- Hydraulic winch
- Manual extensions
- Remote control
- Auxiliary hydraulic intakes
- Cab

### LOAD CHART

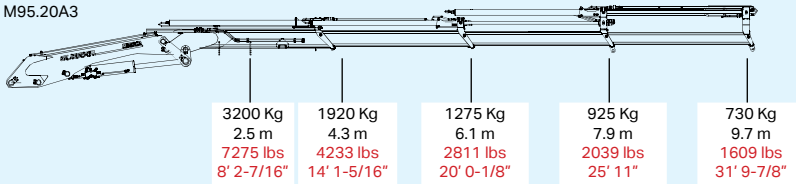
M95.20A1



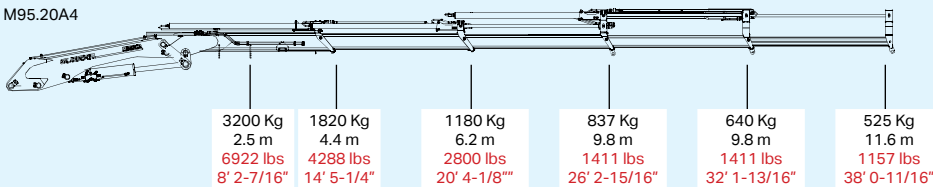
M95.20A2



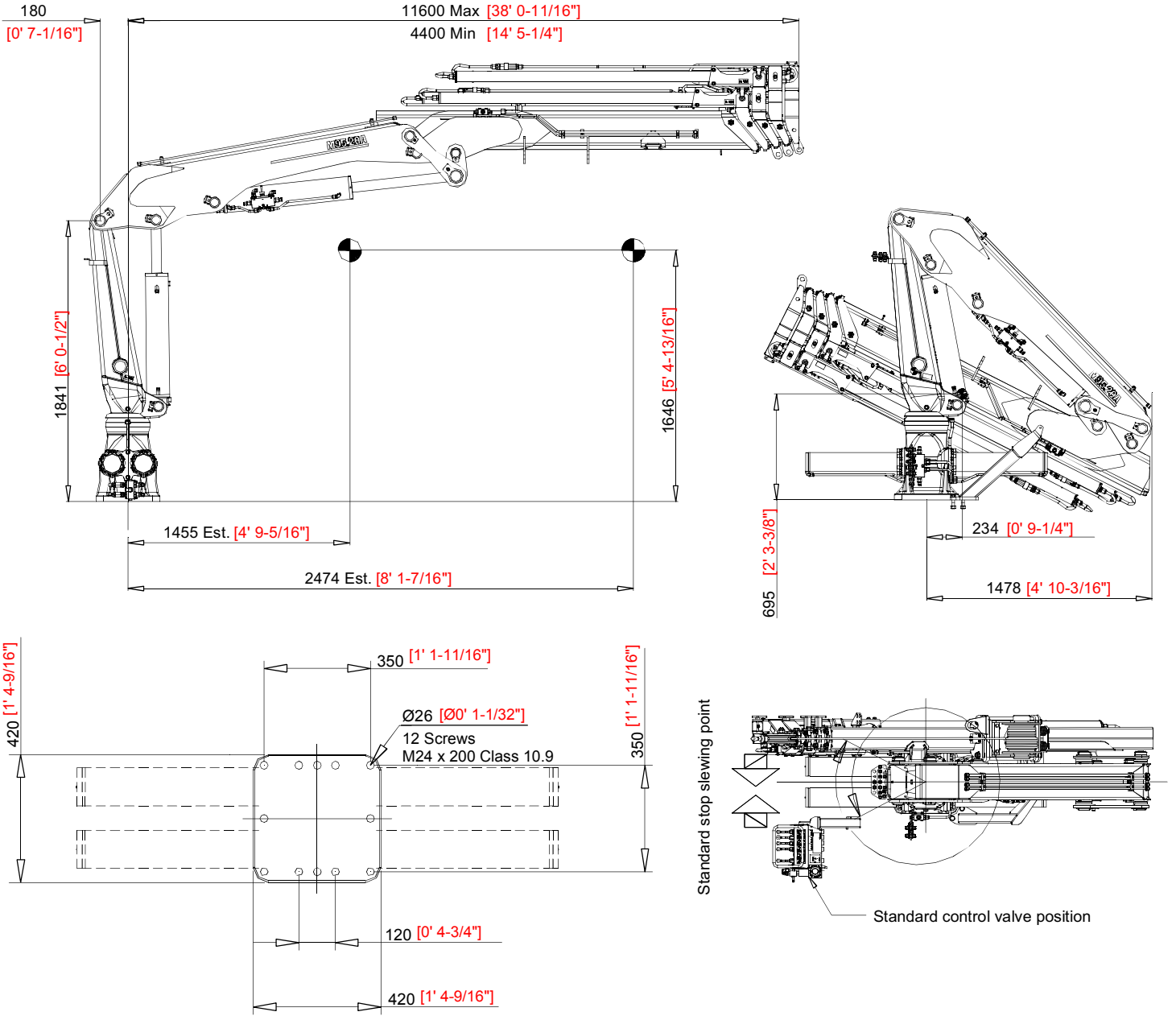
M95.20A3



M95.20A4



# DIMENSIONS



# POSITION DIAGRAM

