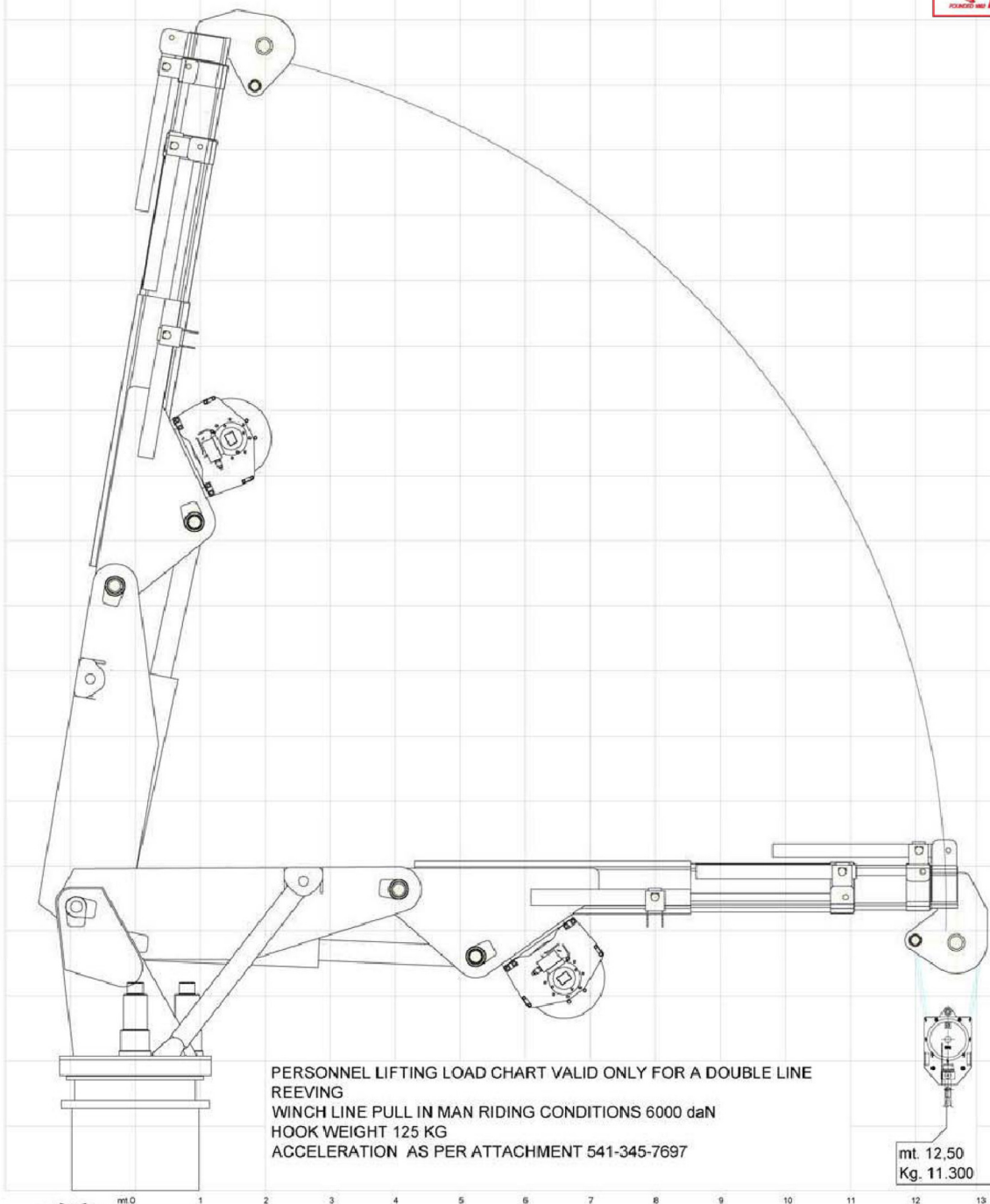


**APPROVED  
AS AMENDED**  
This approval covers  
only ABS requirements and  
does not include items not  
required by ABS.  
Details of this approval are  
set forth in the ABS letter.



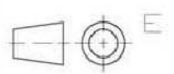
PERSONNEL LIFTING LOAD CHART VALID ONLY FOR A DOUBLE LINE  
REEVING  
WINCH LINE PULL IN MAN RIDING CONDITIONS 6000 daN  
HOOK WEIGHT 125 KG  
ACCELERATION AS PER ATTACHMENT 541-345-7697

360°  
CONTINUI

IFG 500.000 EX3      LOAD CHART MAN RIDING MID-SEA STATE 3 WITH SIGNIFICANT WAVE HEIGHT 0.90 METERS



1123 St. Matthews Road - Chester Springs, PA. 19425 - phone 610.827.2032



N.B. All data shown are subject to change without notice