



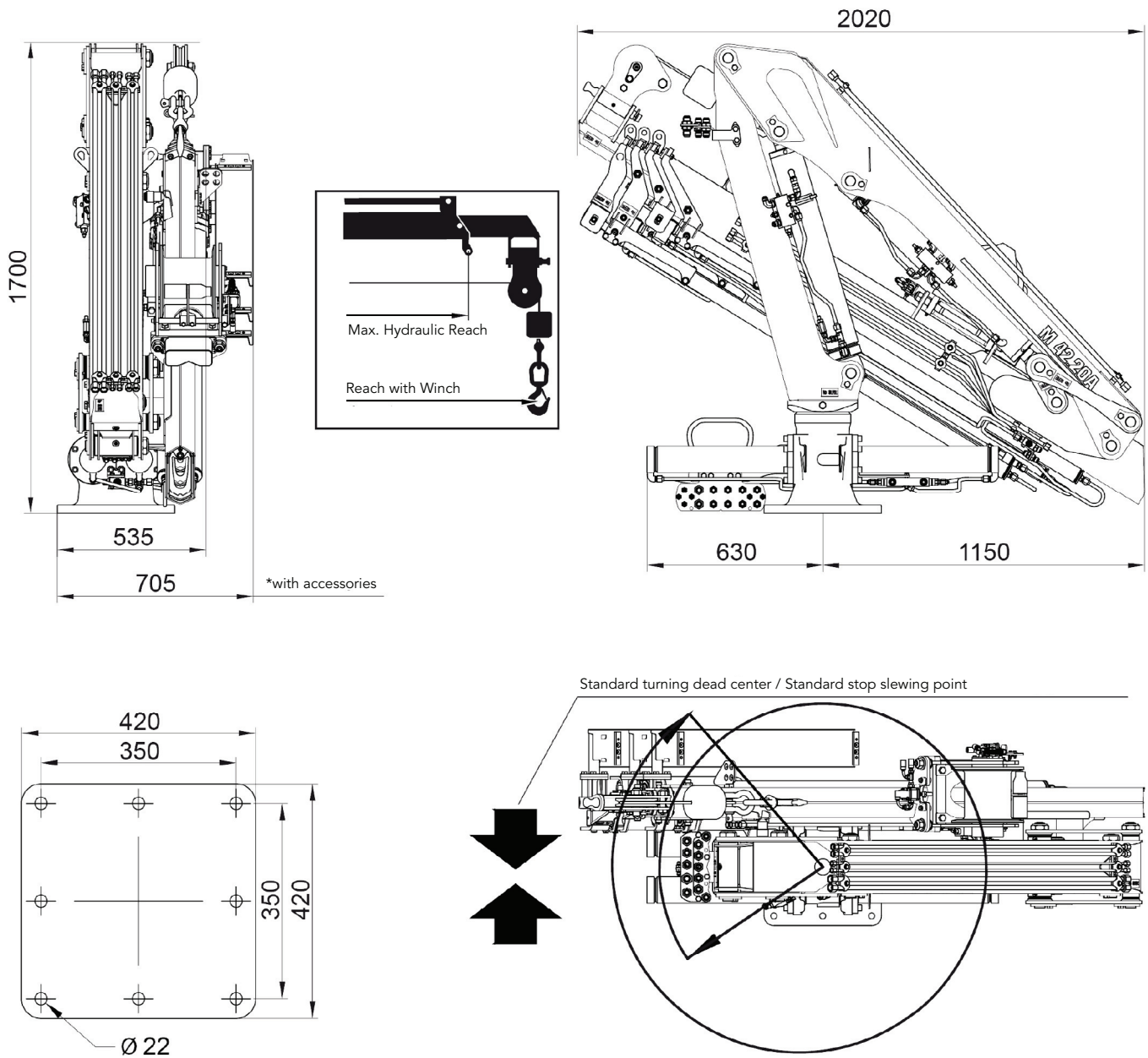
M 42.20A

Hydraulic Marine Cranes








M 42.20A



DIMENSIONS



TECHNICAL DATA

		M 42.20A1	M 42.20A2	M 42.20A3
 MAXIMUM LIFTING CAPACITY	[kNm]	38.6	37.1	35.7
 MAXIMUM HYDRAULIC OUTREACH	[m]	5.0	6.6	8.1
 GROSS SLEWING TORQUE	[kNm]	10	10	10
 SLEWING ANGLE	[°]	382	382	382
 MAXIMUM WORKING PRESSURE	[bar]	210	210	210
 MAXIMUM OIL FLOW	[l/min]	20	20	20
 MASS OF STANDARD CRANE	[Kg]	736	795	846

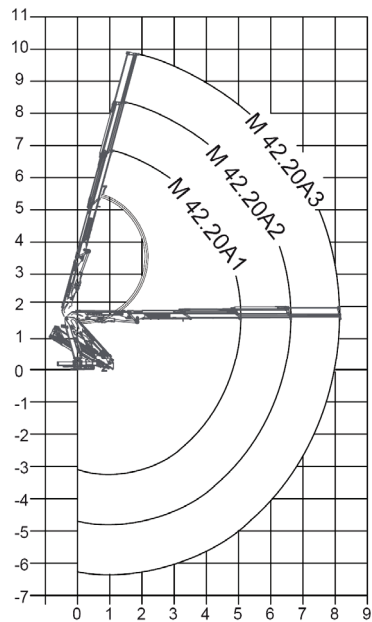
DATA

- ✓ Built according UNE-EN 13001 clas HC2/HD4-S2
- ✓ The structure of the crane is sandblasted and metallized
- ✓ Double coat of priming and two layers of painting
- ✓ Ni-Cr piston rods cylinders for marine environments, chrome plated piston rods on hyd
- ✓ Extensions
- ✓ Hose fittings and Pipes of hydraulic installation in stainless steel
- ✓ Hoses with rubber "type A" double coat
- ✓ Wheel-rack slewing system, via cylinders, with bronze bushings
- ✓ Safety valves on the cylinders
- ✓ Emergency stop button.

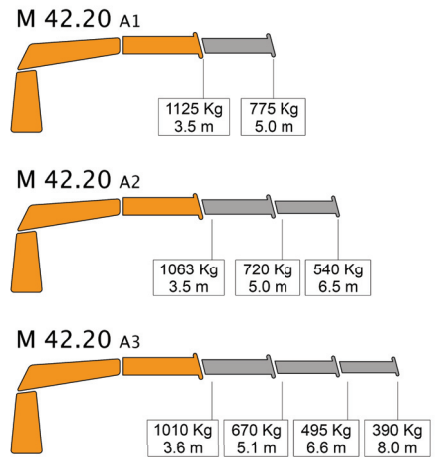
+ OPTIONAL

- ✓ Hydraulic winch.
- ✓ Remote control.
- ✓ Auxiliary hydraulic intakes.
- ✓ Electric, diesel or gasoline HPU

POSITIONS DIAGRAM



LOAD DIAGRAM



Only for use with hook - sea state 0 or harbour condition. For other uses or conditions, contact us. " When operating with winch, loads must be reduced by the weight of installed winch.